

# FARGO & FARGOMAX

SYSTEM FOR ACCESSING DISTAL INTRACRANIAL VESSELS



L'INNOVATION SUR MESURE\*  
[www.balt.fr](http://www.balt.fr)

# FARGO & FARGOMAX

## SYSTEM FOR ACCESSING DISTAL INTRACRANIAL VESSELS

*Balt has capitalised on its expertise in the manufacture of intracerebral micro catheters to create an advanced range of guiding catheters opening new possibilities in interventional neuroradiology.*

*FARGO and FARGOMAX, benefits from all the brand new technology on braiding with variable geometry combined with the optimum back-up support throughout the procedure and optimum distal suppleness for easy access to tortuous distal anatomies.*



### FARGO

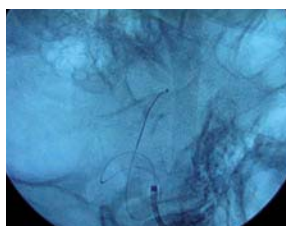
Réf. : **FARGO6F\_115\_8**

- OD: 6F proximal end • 4.9F distal end.  
The super supple distal part which is 8 cm long enables the passage through acute curves.
- It can pass the carotid siphon or be placed right up to the basilar artery.  
ID: **1.40mm (.055")**.
- Total length: 115 cm.  
Hydrophilic coating over distal 10 cm: to improve lubricity and facilitate navigation.



#### Use FARGO:

- When your standard GC is not stable enough.
- Together with the IVA6F80, long introducer and the VASCO+ for your SILK cases.
- For Proximal Thrombus Aspiration.



### FARGOMAX

Réf. : **FARGOMAX6F115\_8**

- OD: 6F  
The super supple distal part which is 8 cm long enables the passage through acute curves.
- ID: **1.78mm (.070")** all along the catheter.
- Total length: 115 cm.

#### Use FARGOMAX:

- For your remodeling balloon assisted coiling procedures with Vasco+10 and Eclipse or Copernic.
- Together with the IVA6F80, long introducer and the VASCO+ for your SILK cases.
- For Proximal Thrombus Aspiration.
- For Hi-Flow Road maps.

