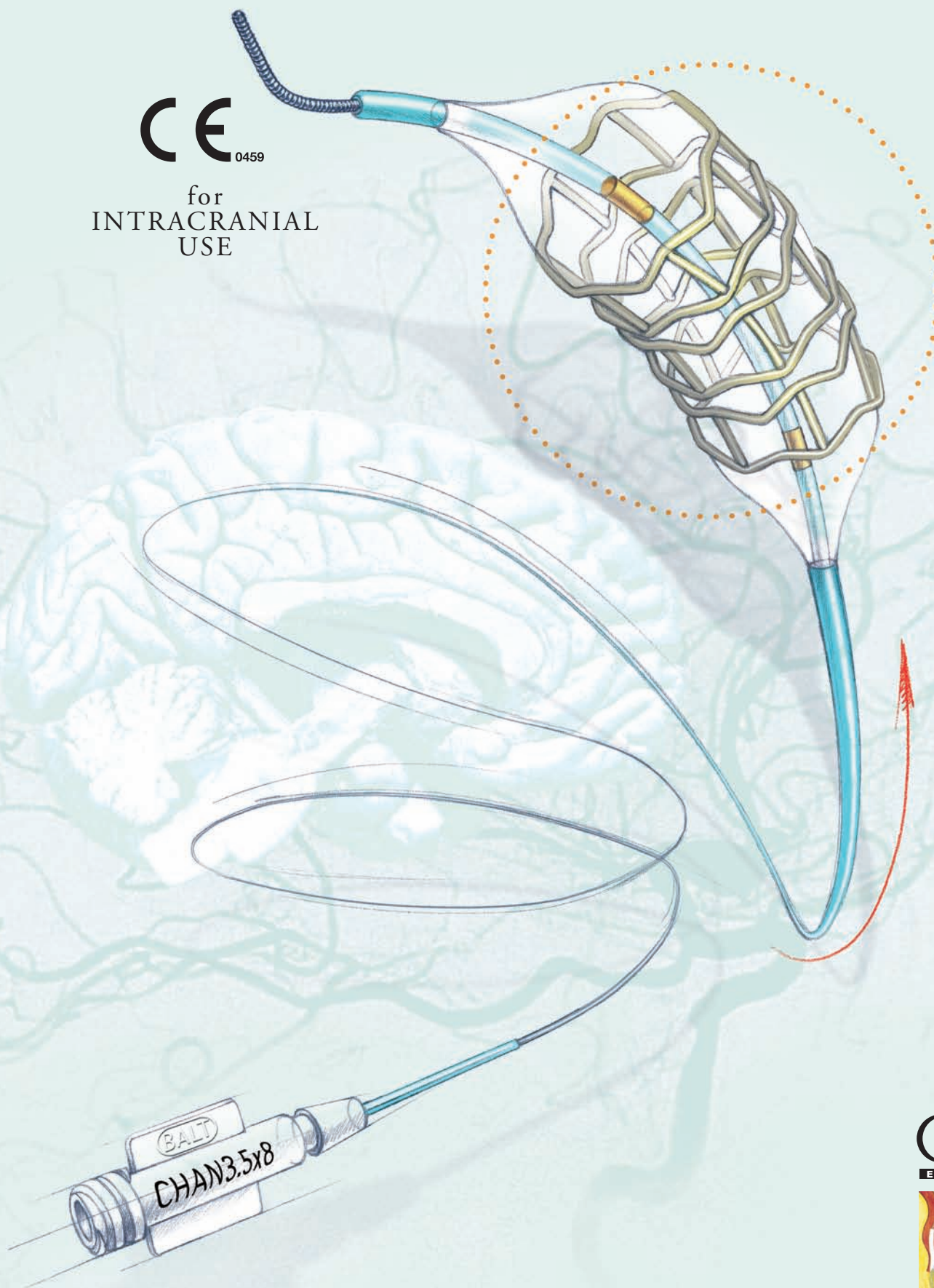


CHANNEL

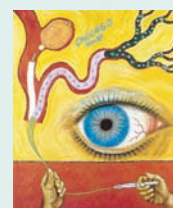
INTRACRANIAL BALLOON EXPANDABLE STENT

CE₀₄₅₉

for
INTRACRANIAL
USE



BALT
EXTRUSION



CHANNEL

The CHANNEL stent, a balloon expandable stent with CE-marking for intracranial use, is specifically designed for the treatment of intracranial atherosclerotic disease:

Easy neurovascular access: the highly flexible structure of the Channel stent offers an enhanced trackability for an easy neurovascular access.

Optimal delivery procedure: made of platinum, thus completely radio opaque, the Channel Stent allows a better procedure control. A dilatation balloon ensures a good deployment to get a precise placement and to minimize the risk of ischemic stroke. The monorail system avoids the use of an exchange guidewire.

Enhanced support: the high outward radial force of the Channel combined with a dilatation balloon provides an excellent support to the artery wall to minimize vessel recoil.

Excellent tolerance: the Platinum excellent chemical stability represents a long-term guarantee of biocompatibility.

CHANNEL STENT range

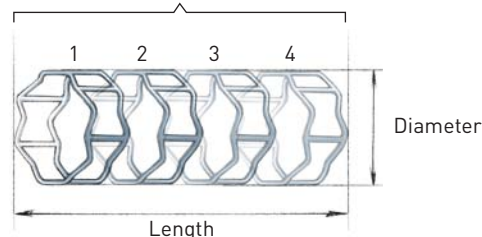
Reference	Diameter (mm)	Length (mm)	Number of rings
CHAN2,5X5	2,5	5	2
CHAN2,5X8	2,5	8	3
CHAN3,0X5	3,0	5	2
CHAN3,0X8	3,0	8	3
CHAN3,0X11	3,0	11	4
CHAN3,5X5	3,5	5	2
CHAN3,5X8	3,5	8	3
CHAN3,5X11	3,5	11	4
CHAN3,5X14	3,5	14	5
* CHAN3,5X17	3,5	17	6
* CHAN3,5X20	3,5	20	7
CHAN4,0X6	4,0	6	2
CHAN4,0X9	4,0	9	3
CHAN4,0X12	4,0	12	4
CHAN4,0X15	4,0	15	5
CHAN4,5X6	4,5	6	2
CHAN4,5X9	4,5	9	3
CHAN4,5X12	4,5	12	4
CHAN4,5X15	4,5	15	5
* CHAN4,5X19	4,5	19	6
* CHAN4,5X22	4,5	22	7

*Manufactured on request



Deployed stent

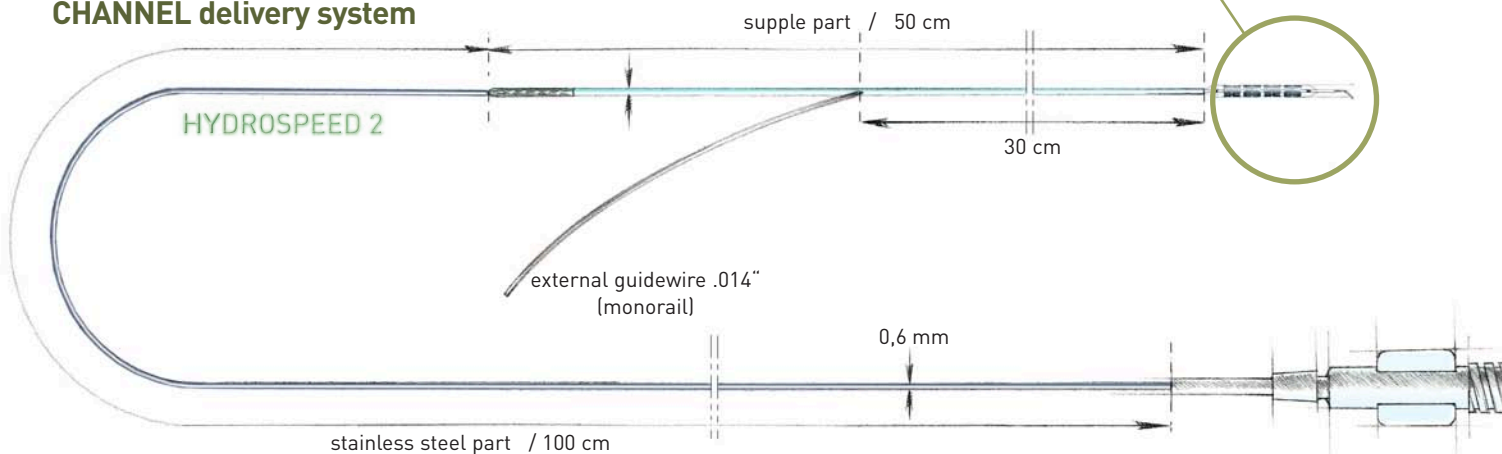
Number of rings



Recommended guidewire : .014"
Recommended guiding catheter : 6F



CHANNEL delivery system



DC019GB 2006/09