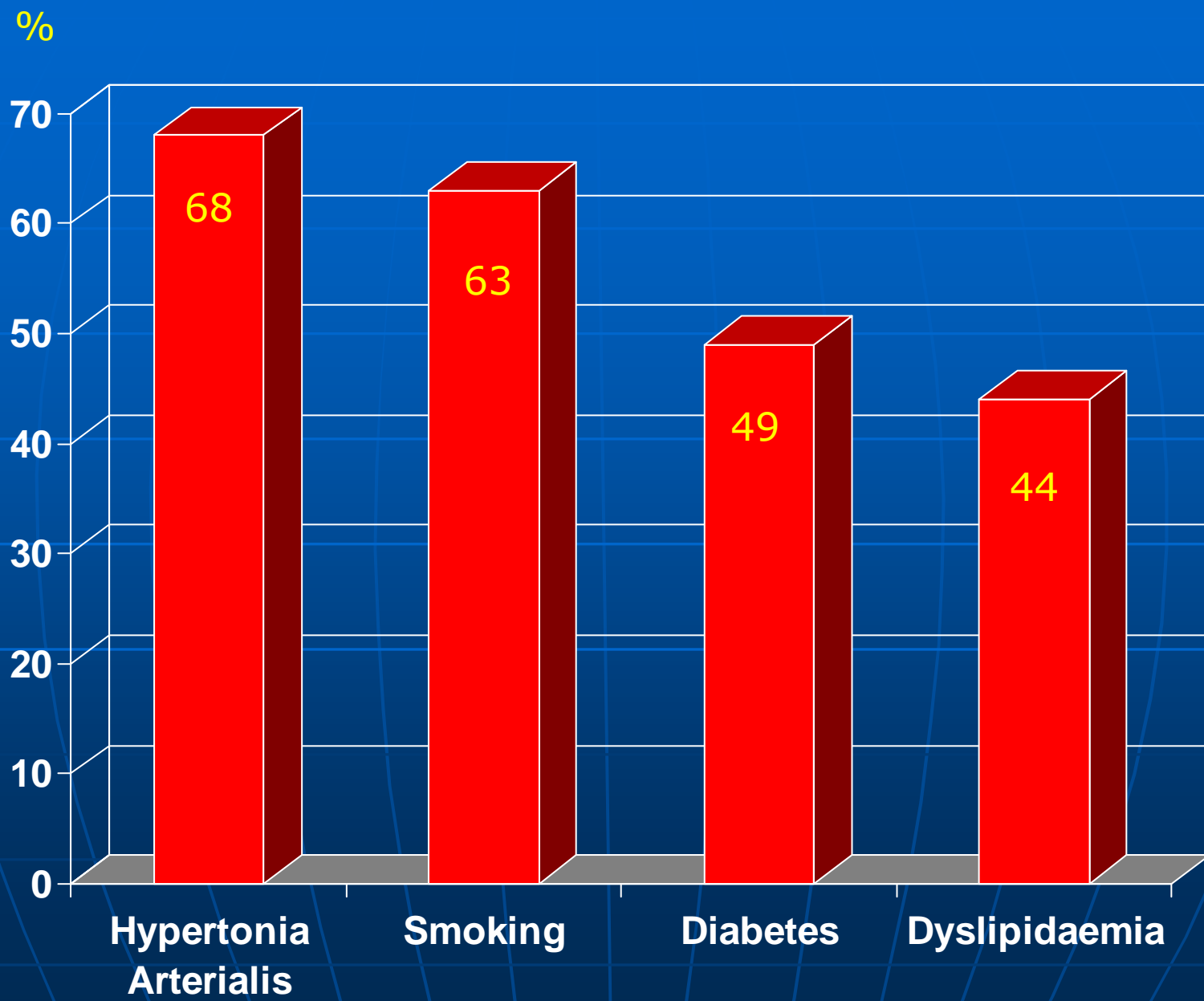


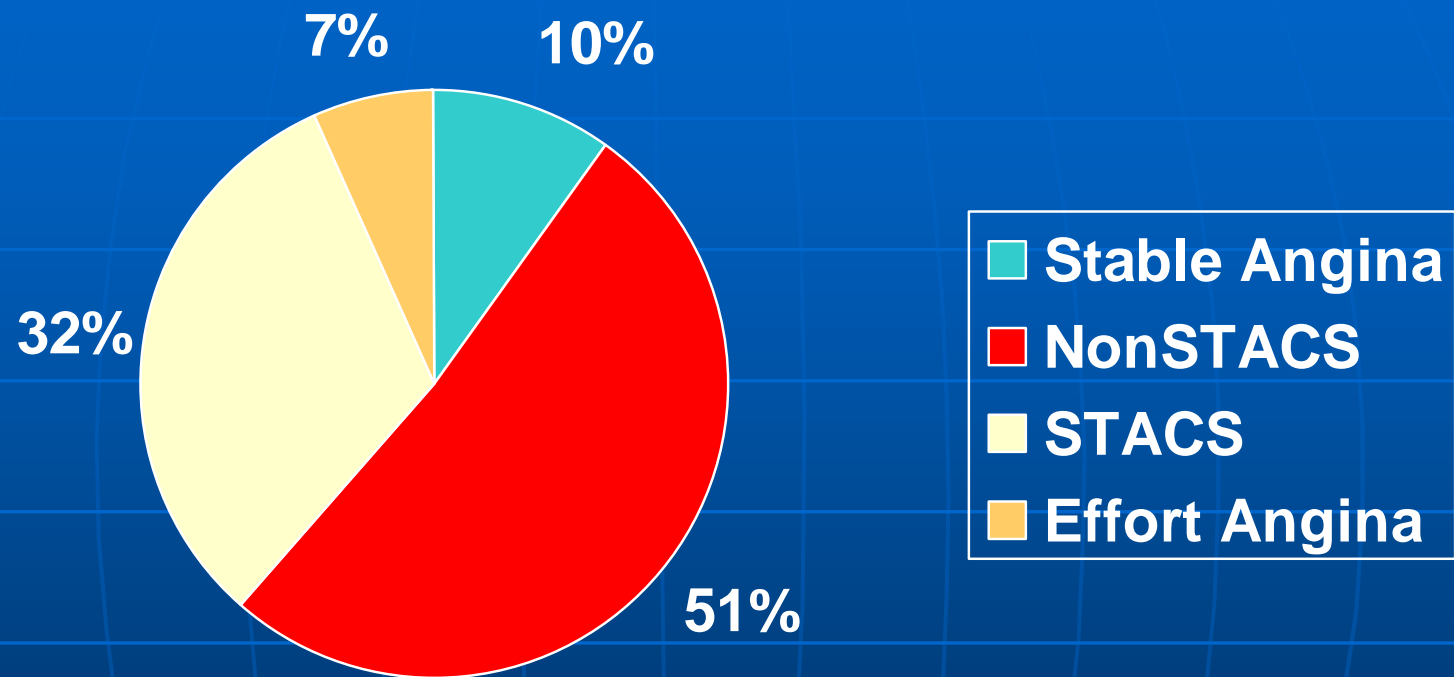
# SAFETY AND EFFICACY OF LUC-CHOPIN STENTS

Andrés LM, Ten F, Sánchez E, Doménech MD, Ortiz V, Cano  
O, Izquierdo MT, Agüero J, Salvador

Department of Invasive  
Cardiology  
La Fe University Hospital in  
Valencia

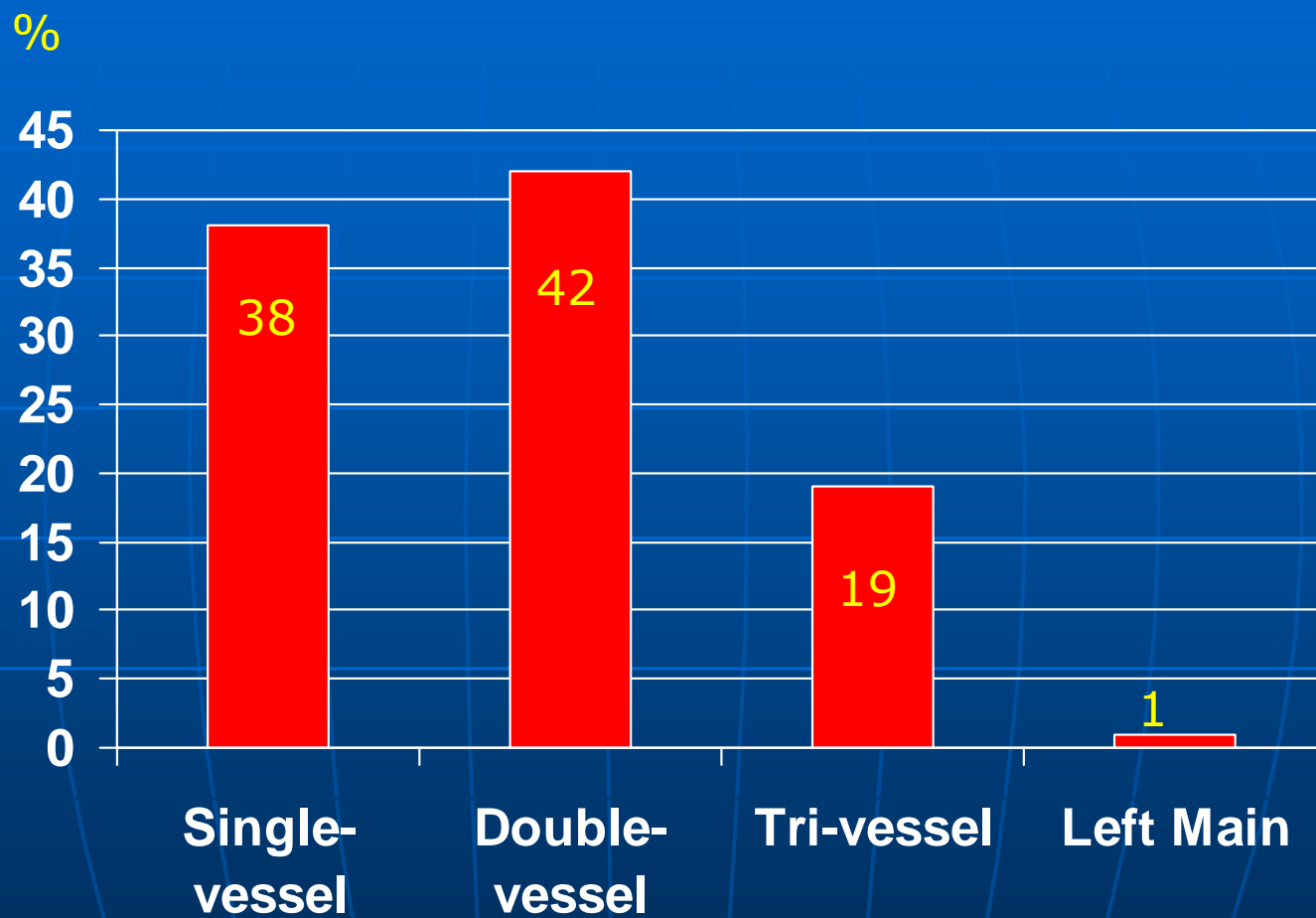
- 77 patients (follow-up completed for 72)
- May – December 2006
- All lesions eligible for drug eluting stent implantation (DES)
- Age:  $62 \pm 10$
- Man: 83%
- Previous myocardial infarction: 14%
- Prior coronary intervention: 10%
- Previous stent implantation: 3%





**Non STACS- non ST elevation acute coronary syndrom**  
**STACS- ST elevation coronary syndrom**

# Lesion Location



**128 stents  
(1,66 stents per 1 patient)**

**Number of lesions with stent**

		Frequency	Percent	Valid Percent	Cumulative Percent
Valid	1	37	48,1	48,1	48,1
	2	27	35,1	35,1	83,1
	3	12	15,6	15,6	98,7
	4	1	1,3	1,3	100,0
	Total	77	100,0	100,0	

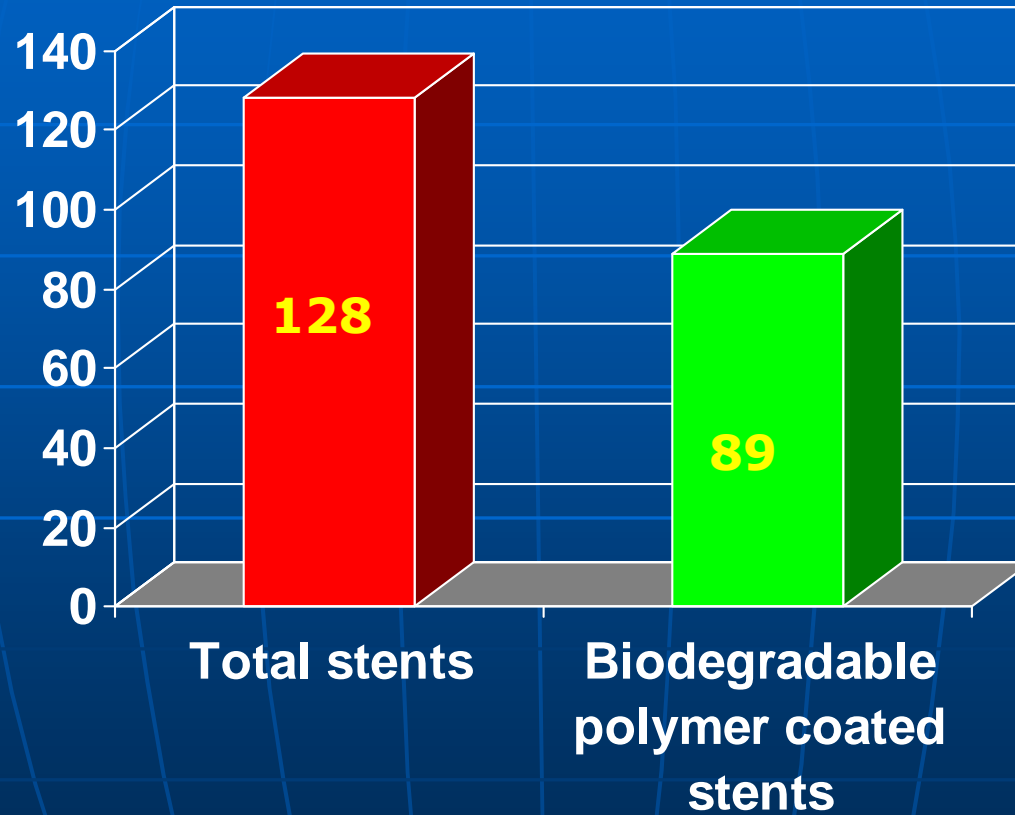
## 89 LUC-Chopin stents (70%, 1,16 stents per patient)

### Number of lesions with stent

		Frequency	Percent	Valid Percent	Cumulative Percent
Valid	1	65	84,4	84,4	84,4
	2	12	15,6	15,6	100,0
	Total	77	100,0	100,0	

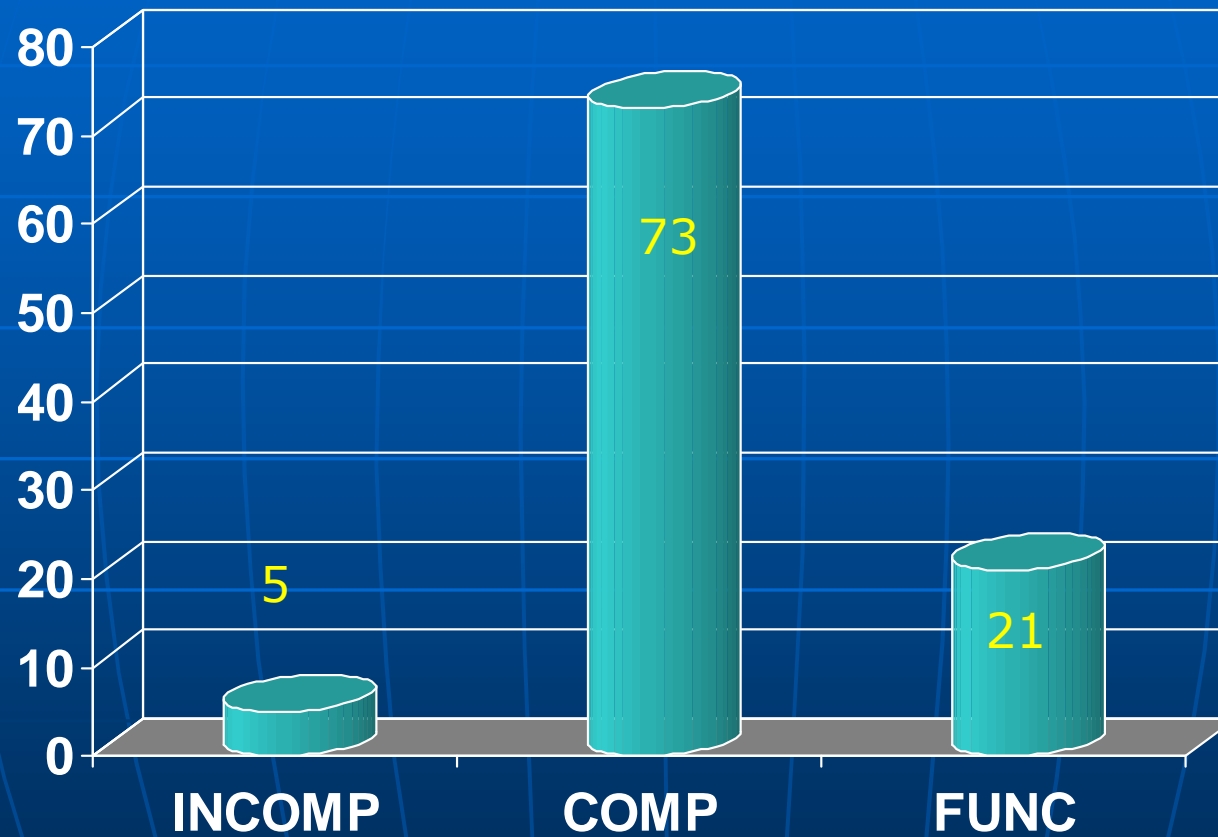
# Number of patients with stent/biodegradable polymer coated stent

%

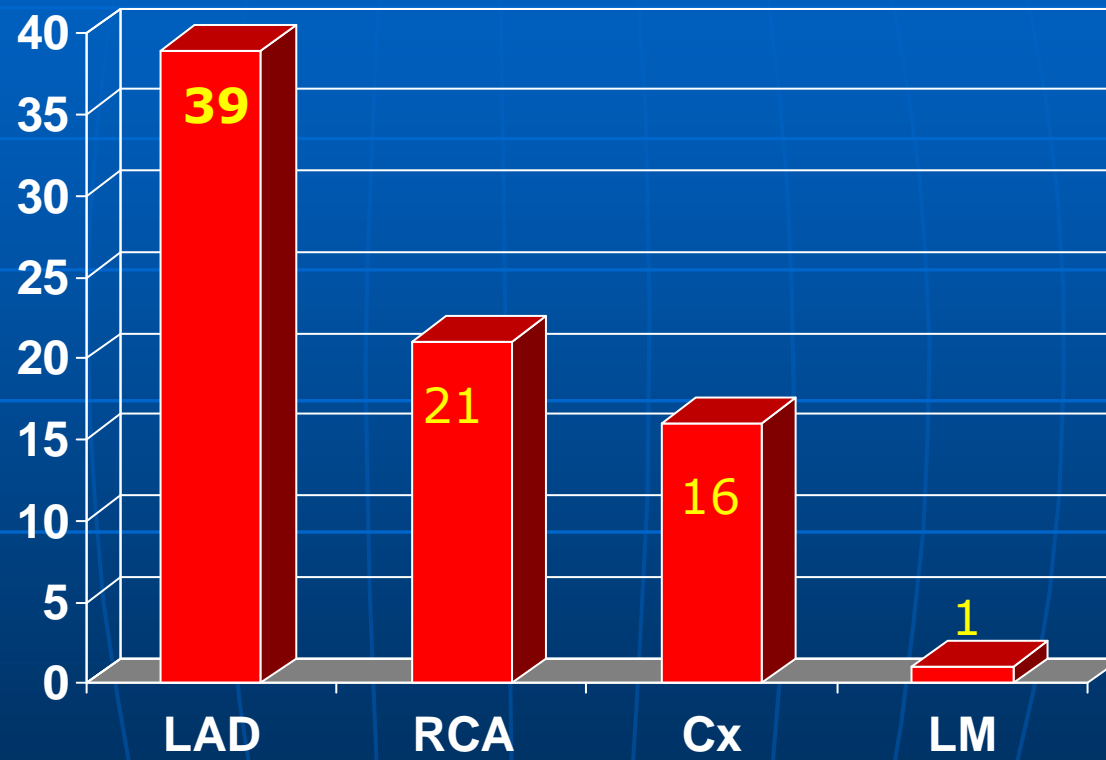




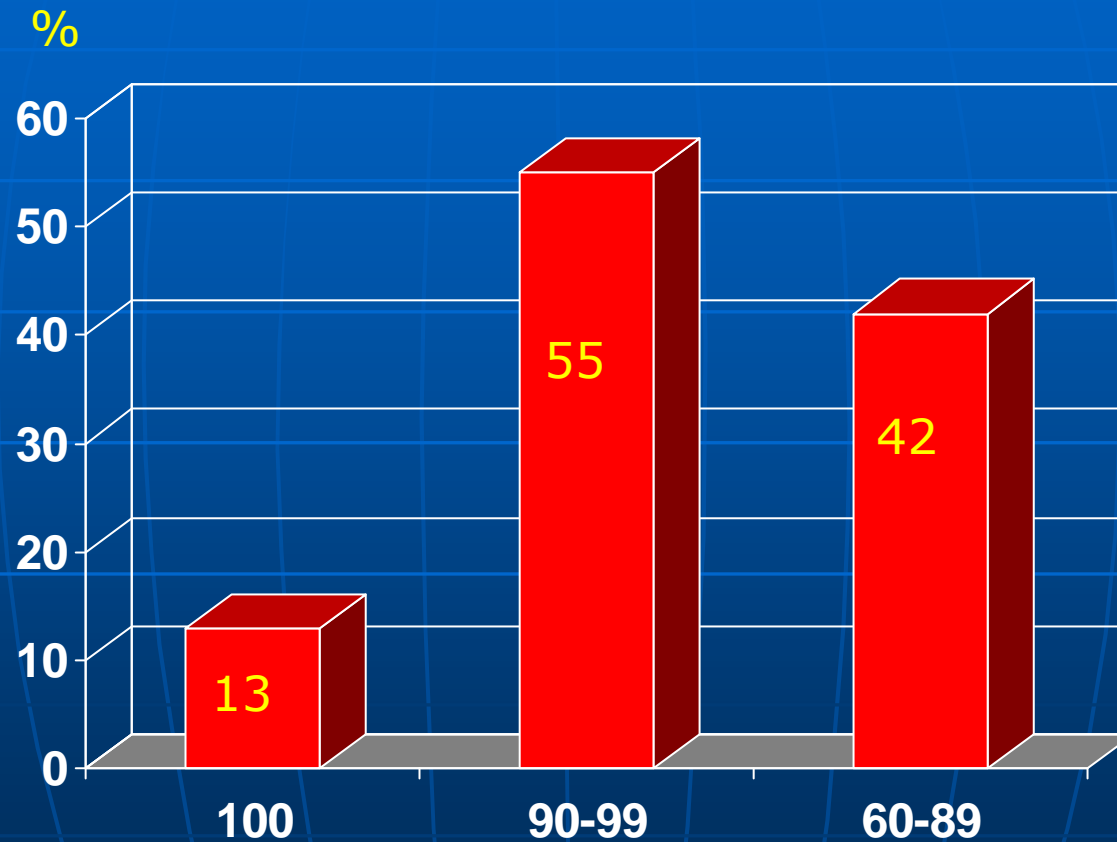
## Type of revascularization (%)



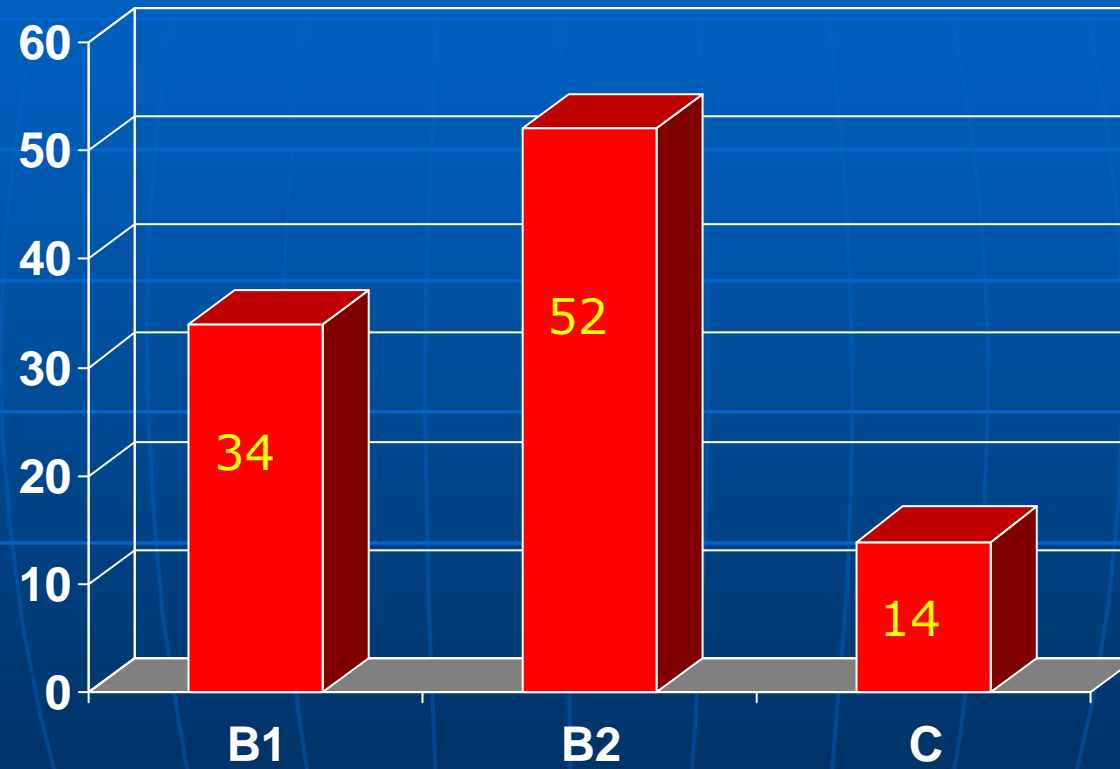
## Lesion location



## Degree of stenosis before stent implantation



## Lesion type based on AHA classification (%)



# Implantation characteristics

- Mean diameter:  $2,99 \pm 0,42$
- Mean length:  $18,43 \pm 5,33$
- Predilatation: 66%
- Postdilatation: 5%
- Mean pressure (ATM):  $12,42 \pm 1$

## TIMI flow after stents implantation

		Frequency	Percent	Valid Percent	Cumulative Percent
Valid	TIMI II	1	1,3	1,3	1,3
	TIMI III	76	98,7	98,7	100,0
	Total	77	100,0	100,0	

- Initial success: 100%
- Dissections: 0%
- Branch lost: 2,6%
- IIb/IIIa inhibitor: 42%
  
- No periprocedural complications

## In-hospital complications

		Frequency	Percent	Valid percent	Cumulative Percent
<b>Valid</b>	<b>No.</b>	<b>61</b>	<b>79,2</b>	<b>93,8</b>	<b>93,8</b>
	<b>Subacute thrombosis</b>	<b>1*</b>	<b>1,3*</b>	<b>1,5</b>	<b>95,4</b>
	<b>Major bleeding</b>	<b>2</b>	<b>2,6</b>	<b>3,1</b>	<b>98,5</b>
	<b>Stroke</b>	<b>1</b>	<b>1,3</b>	<b>1,5</b>	<b>100,0</b>
	<b>Total</b>	<b>65</b>	<b>84,4</b>	<b>100,0</b>	
<b>Missing</b>	<b>System</b>	<b>12</b>	<b>15,6</b>		
<b>Total</b>		<b>77</b>	<b>100,0</b>		

**\* Conventional stent of another company**



# Follow-up

- N=72 (93%)
- 170±61 days
- Asymptomatic: 83% (n=60)
- Stable angina: 12,5% (n=9)
- Myocardial infarction: 4% (n=3)
- Death: 0%

- Coronarography during follow-up: n=6 (8%)
  - In-stent restenosis: n=1\* (1,4%)
  - Thrombosis: 0%

\* Stent of another company

## Indication for re-PTCA

		Frequency	Percent	Valid percent	Cumulative Percent
<b>Valid</b>	<b>Stable angina</b>	<b>1</b>	<b>1,3</b>	<b>25,0</b>	<b>25,0</b>
	<b>Non STACS</b>	<b>2</b>	<b>2,6</b>	<b>50,0</b>	<b>75,0</b>
	<b>STACS</b>	<b>1</b>	<b>1,3</b>	<b>25,0</b>	<b>100,0</b>
	<b>Total</b>	<b>4</b>	<b>5,2</b>	<b>100,0</b>	
<b>Missing</b>	<b>System</b>	<b>73</b>	<b>94,8</b>		
<b>Total</b>		<b>77</b>	<b>100,0</b>		

# Conclusions

1. Paclitaxel eluting, biodegradable polymer coated stents are safe and feasible
2. In-stent restenosis is very low
3. There was no case of stent thrombosis